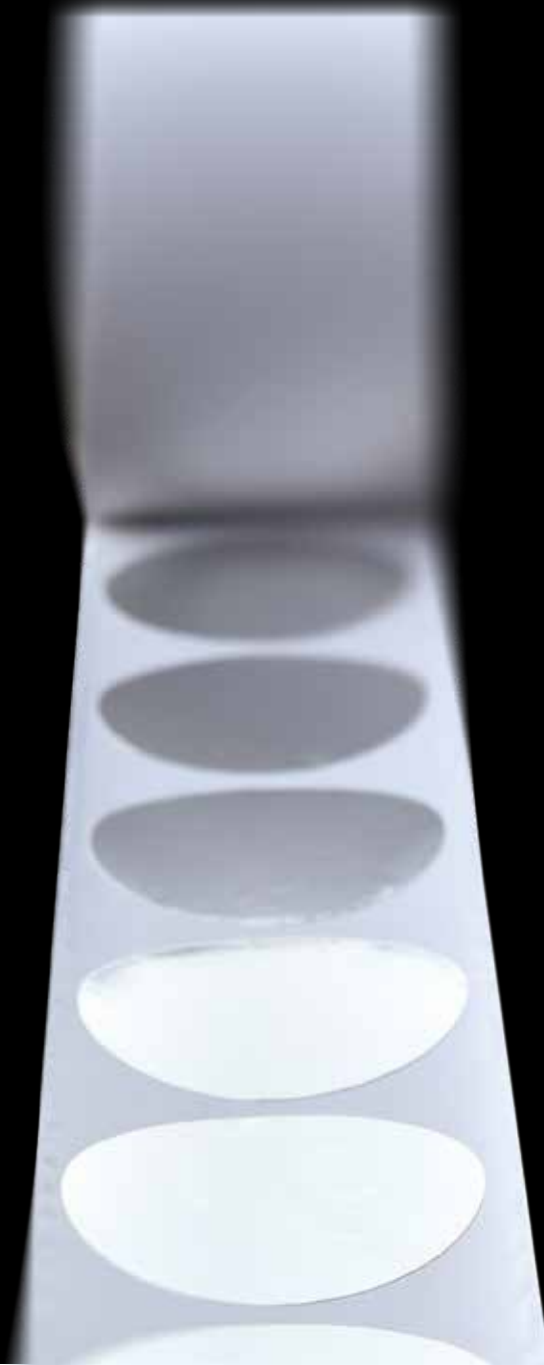


POINT FOR YOU!

PAROC HVAC DOTS



Perfect
coverage
of head
pins



PAROC[®]



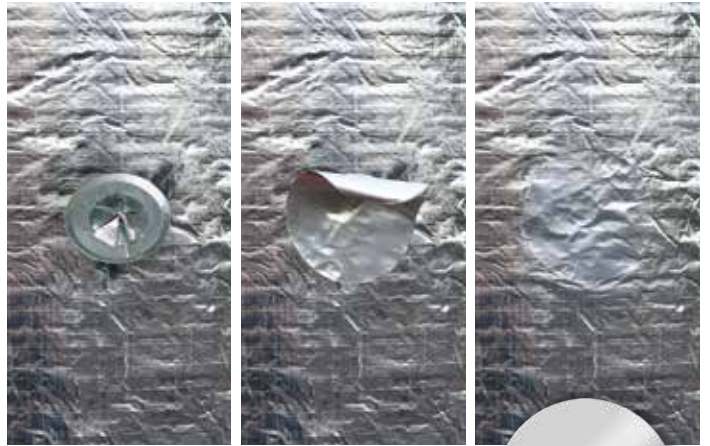
PAROC HVAC DOTS

- The best solution for covering the head pins used on lamella mat on a duct in a fast, clean, even, moisture-proof and convenient way
- Large portfolio of accessories: Complete system including PAROC Head Pin, spatula, PAROC Hvac Lamella Mat AluCoat, PAROC Hvac Tape and PAROC Hvac Dots
- For less waste on the construction site
- Maintenance-free - will last as long as insulation
- Only spatula needed for fixation

Aesthetics and functionality

Until now, installers had to cover head pins when fixing AluCoat lamella mats to the duct by tearing off foil or cut it with knife or scissors one by one and stick it manually on the head pins. Those "circular plasters" were not necessarily cut with clean edges or glued smoothly onto the pins surface causing wrinkles and an uneven surface and therefore causing danger of moisture ingress.

PAROC Hvac Dots are a clean, fast and convenient way to cover the pins' heads; they are self adhesive, come on a roll and can be stuck directly on the head pins with the help of a spatula. This is much faster and cleaner and generates a smooth, gapless and even insulation without any risk of condensation. It is very easy to lift the single dot from the release paper.



**Perfect
coverage
of head
pins**

Application

coverage of head pins on duct insulation

Packaging information

Diameter [mm]	Dots on a roll	Packing	Temperature resistance
60	750	8 rolls/box	80 °C



Technical information contained herein is furnished without charge or obligation and is given and accepted at recipient's sole risk. Because conditions of use may vary and are beyond our control, Paroc makes no representation about, and is not responsible or liable for the accuracy or reliability of data associated with particular uses of any product described herein. Paroc reserves the right to modify this document without prior notice.

12.20
TIEN122020
© Paroc 2020

**OWENS
CORNING** **PAROC**[®]